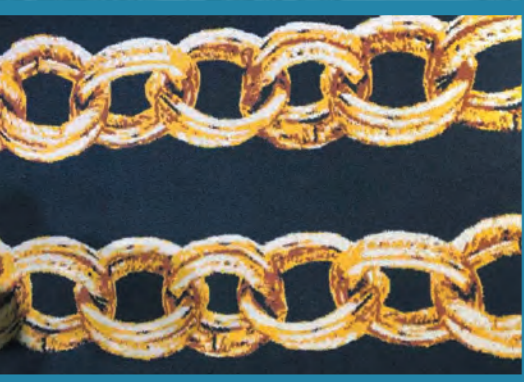




MICHISHITA IRON WORKS

Tufting Machine
Made in Japan



MICHISHITA IRON WORKS

Company locationx
475-1, Tanjo, Mihara ku, Sakai city, Osaka
587-0011, Japan

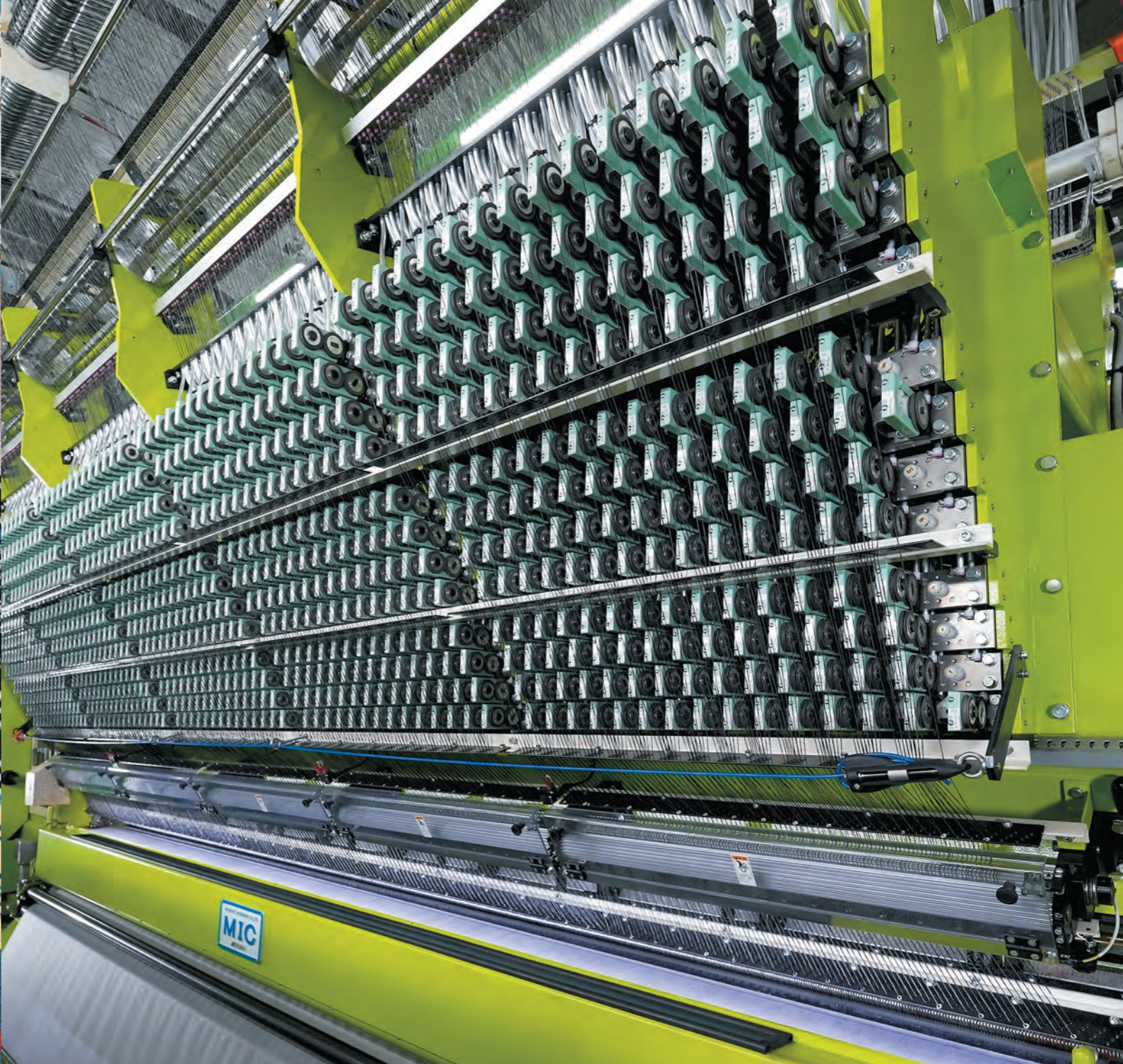
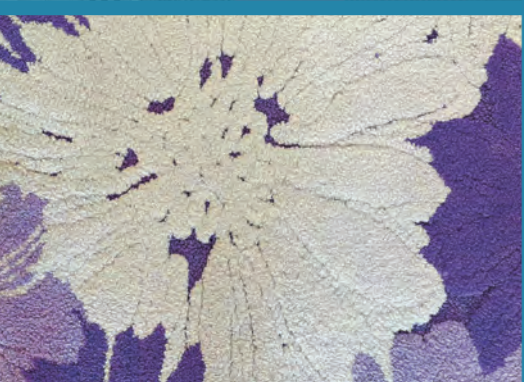
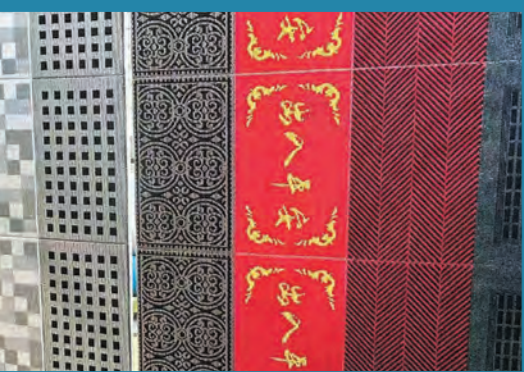
Phone
+81-723-616497

E-mail
haruna@mic-pon.co.jp

WEB
<http://mic-pon.co.jp>



2025.12.200MT





MICHISHITA IRON WORKS

Company profile

Established December 1st, 1969
 President Koichi Michishita
 Company locationx 475-1, Tanjo, Mihara ku, Sakai city, Osaka 587-0011, Japan
 Phone +81-723-616497

Company History

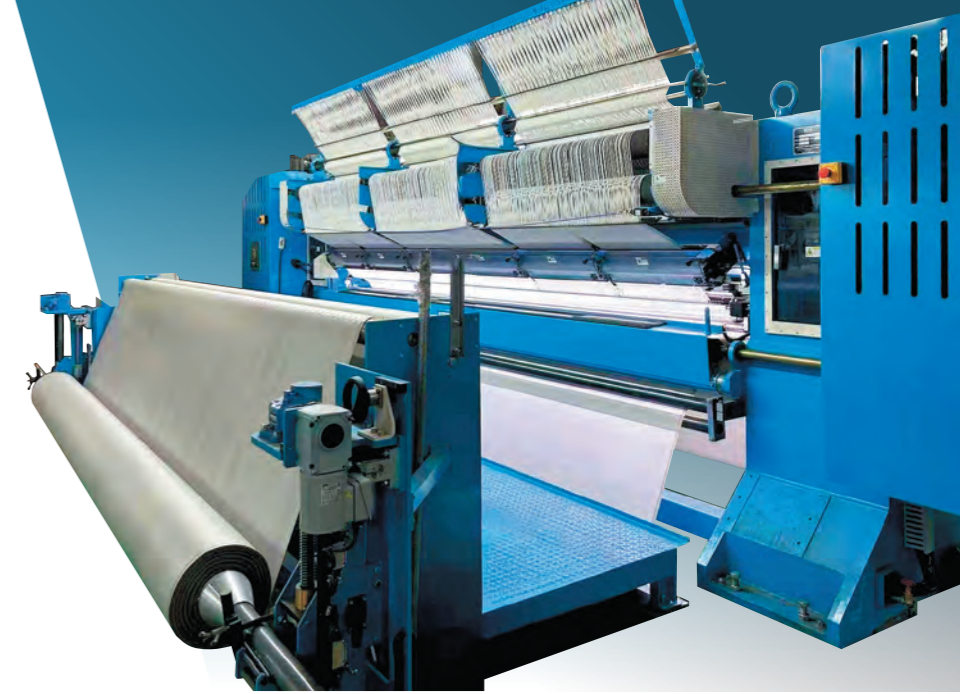
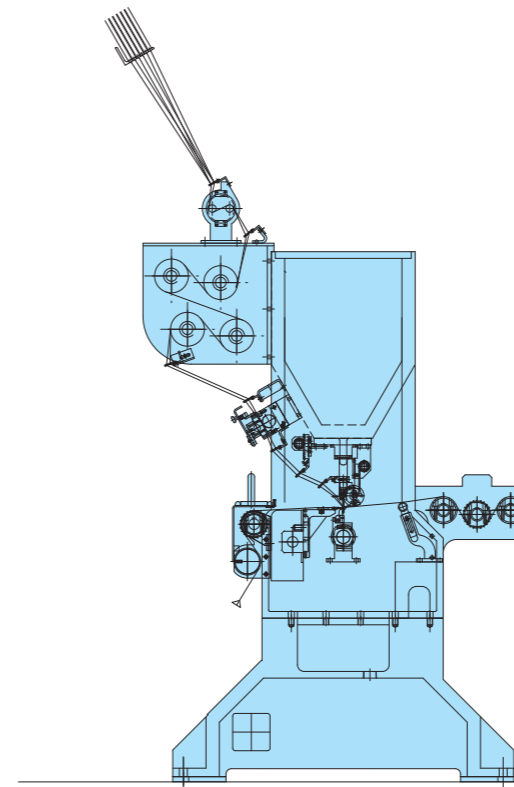
- 1950 Founded by Masayuki Michishita
- 1969 Incorporated as Michishita Iron Works Co., Ltd., specializing in textile machinery.
- 1973 New factory completed and head office relocated to Mihara-ku, Sakai City (current location)
- 1989 Koichi Michishita appointed President.
- 1998 Started manufacturing tufting machines.
- 2003 Started exporting tufting machines to global markets.
- 2018 New office completed.
- 2020 Certificated ISO 9001.

Japanese Quality, Engineered for Your Success

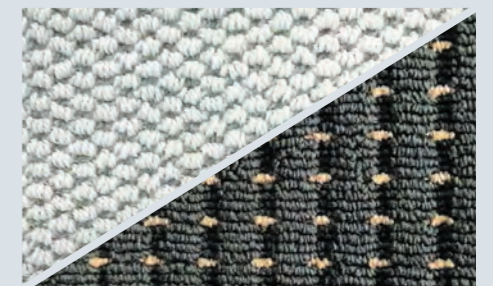
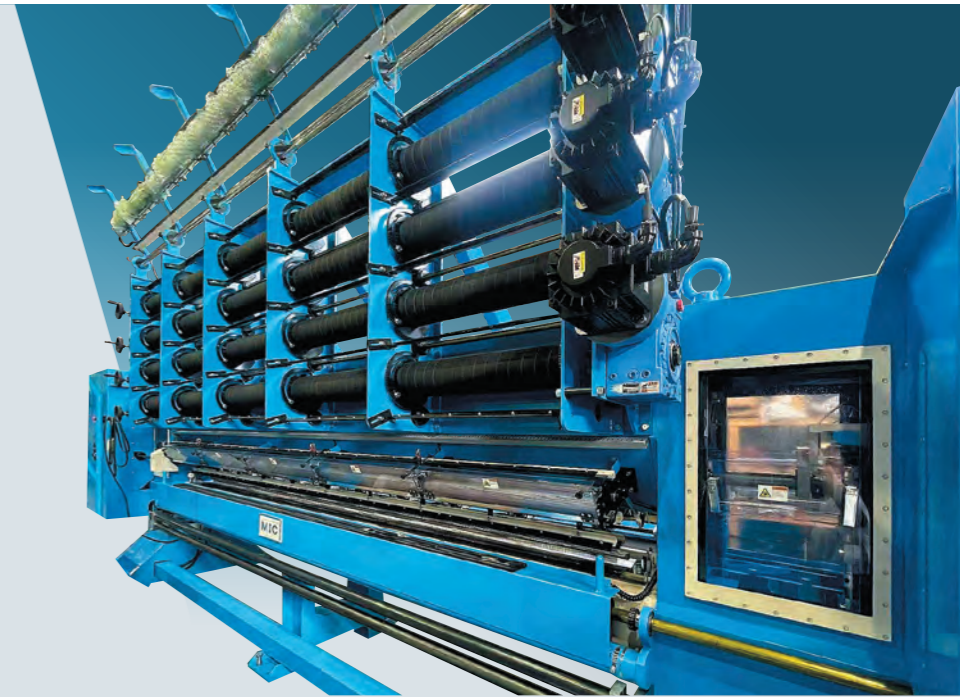
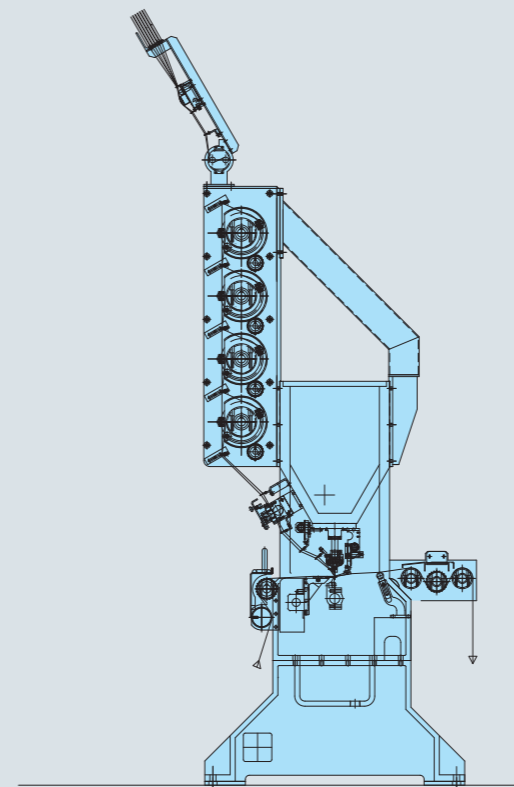
Experience the confidence that comes with true Made-in-Japan excellence. Our machines are built on decades of craftsmanship, refined engineering, and an uncompromising focus on performance. We invest relentlessly in innovation, developing advanced technologies that deliver higher efficiency, greater durability, and smoother, more reliable operation. Every solution we create is designed to help you outperform, stay competitive, and grow stronger in your market. Your goals drive our progress. Your challenges shape our innovation. Your success is the standard we measure against. Partner with us and elevate your manufacturing with proven Japanese precision and quality.



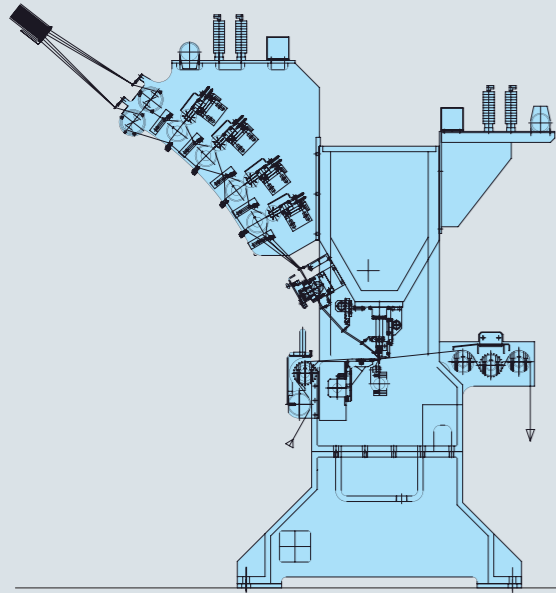
Level Loop



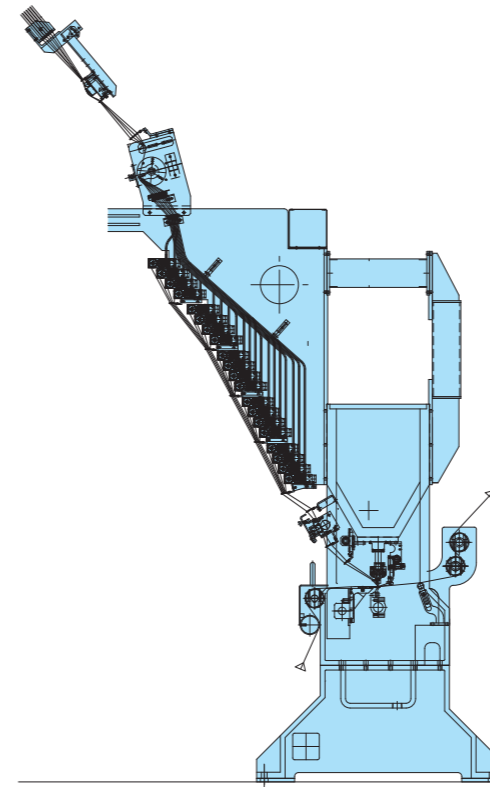
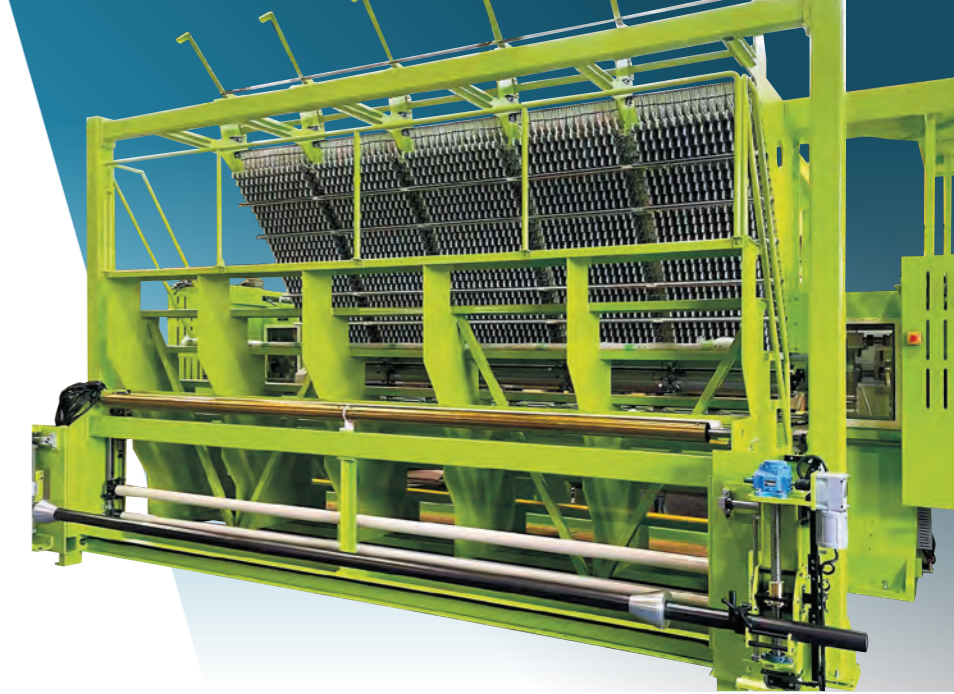
Q.T.S + Loop



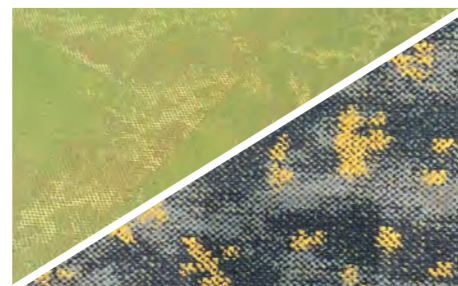
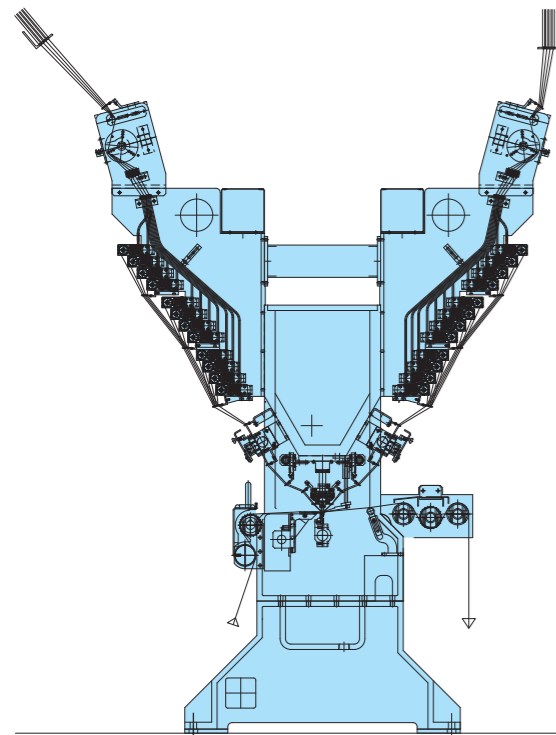
2PH F.R.S + Loop



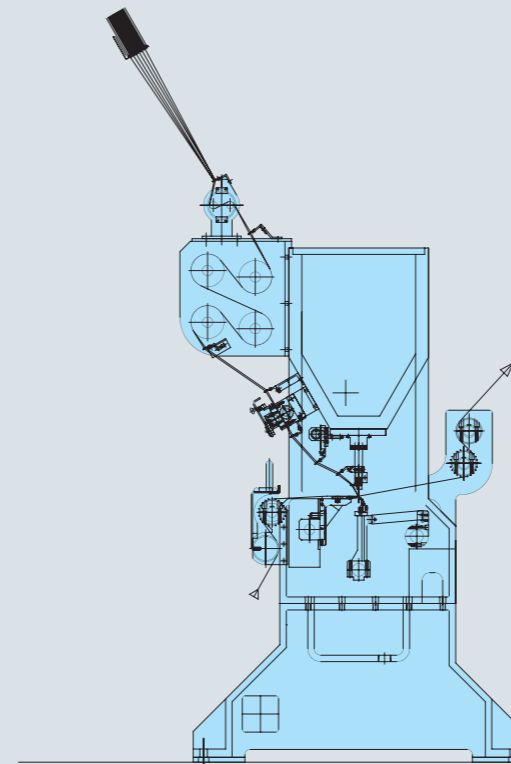
Android Loop



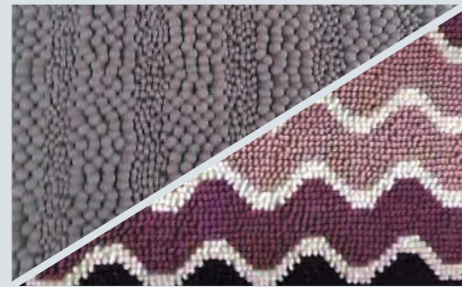
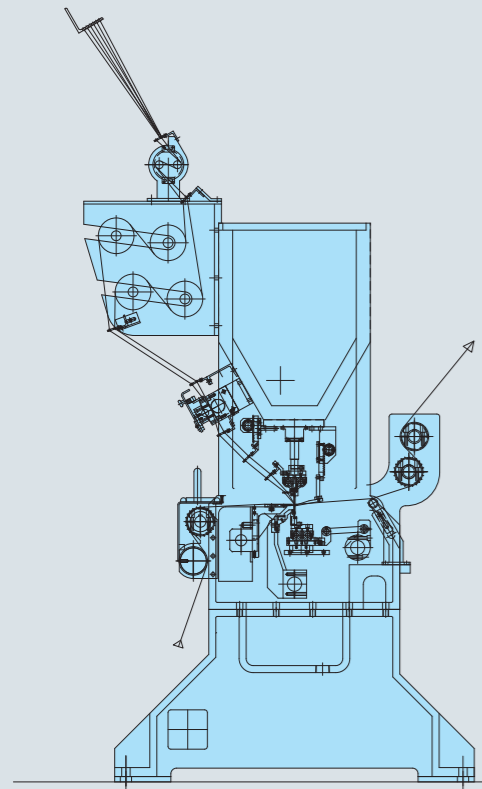
I.C.Y + Loop



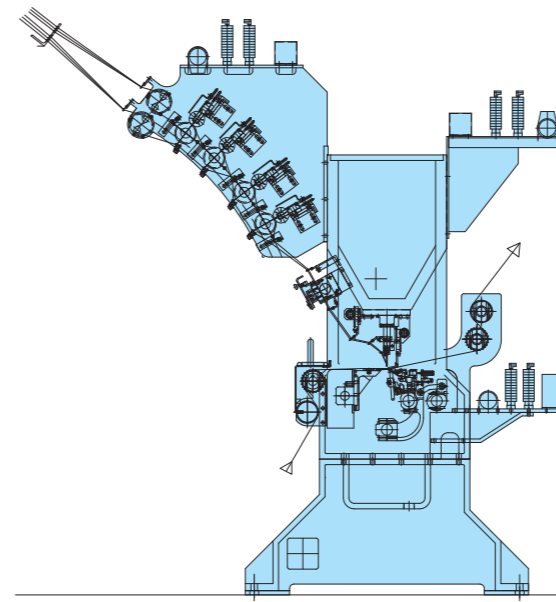
Chain Stitch Loop



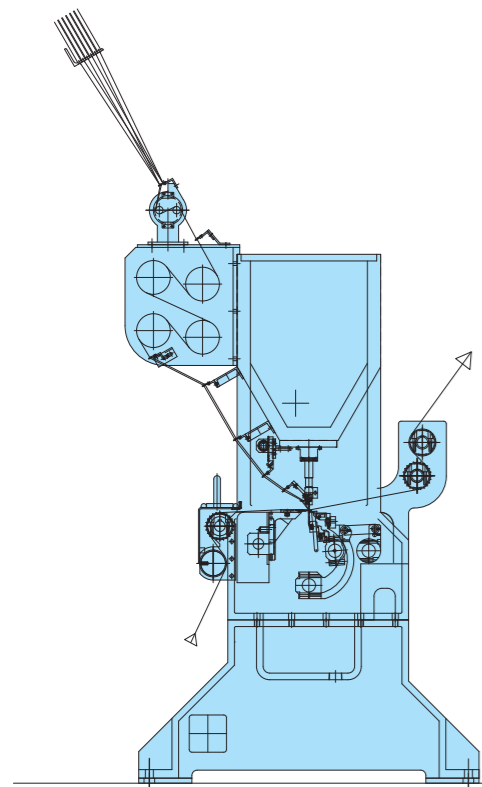
Chenille Loop



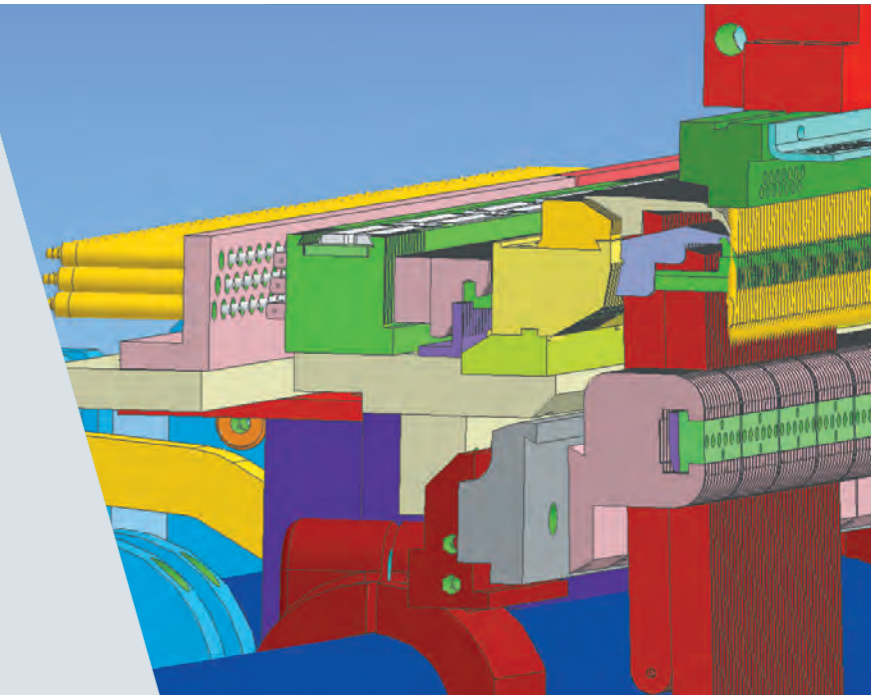
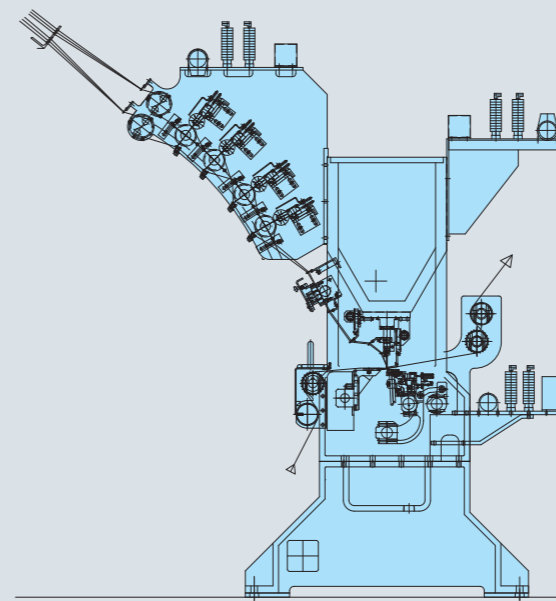
2PH F.R.S + Cut & Loop



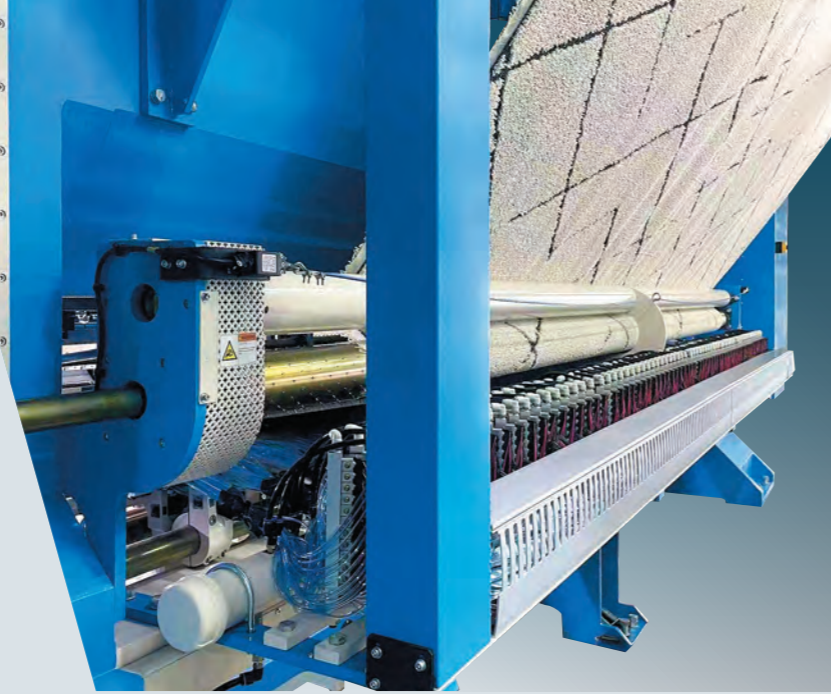
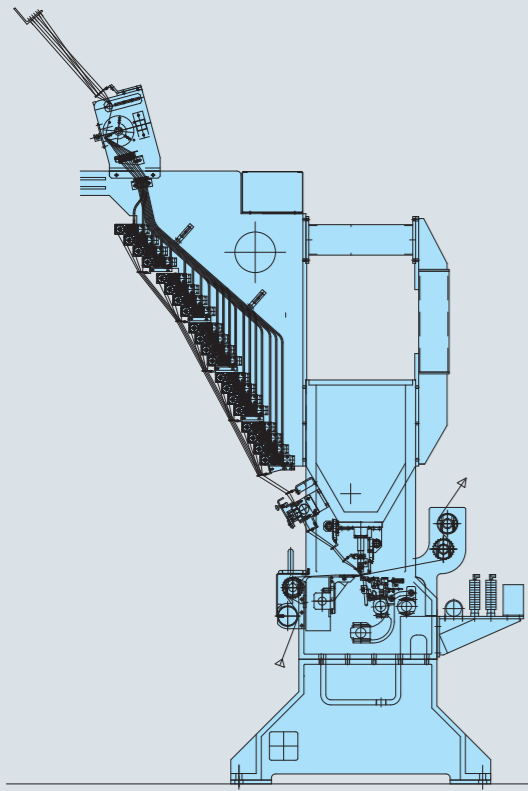
Level Cut



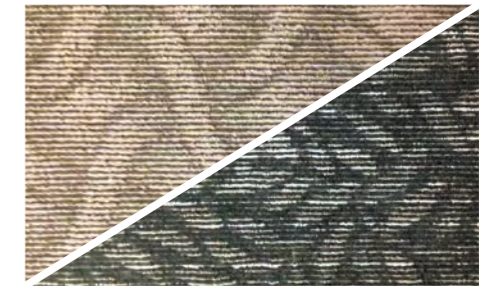
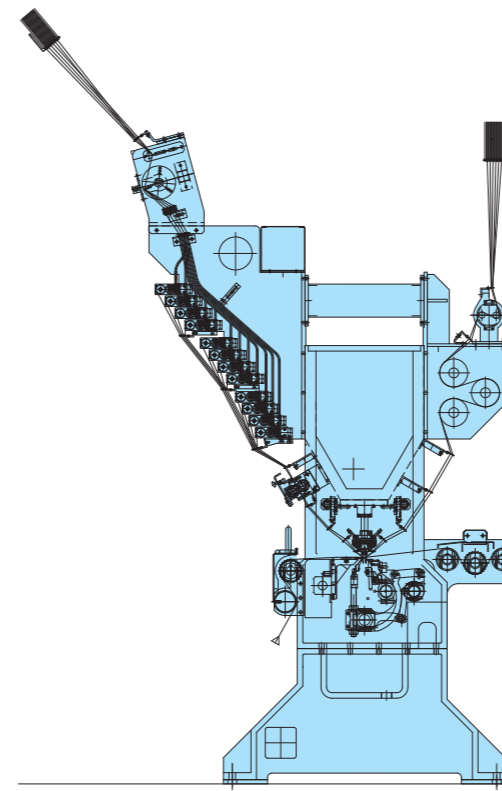
2PH F.R.S + High Cut / Low Cut



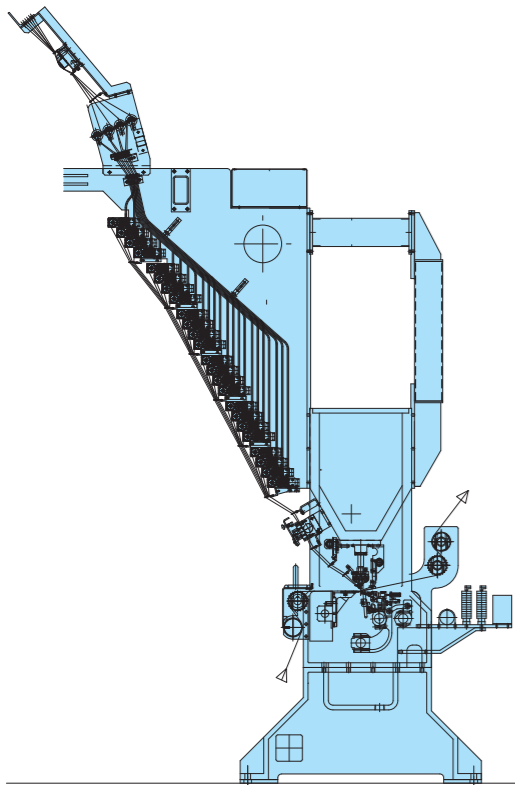
I.C.Y + Cut & Loop



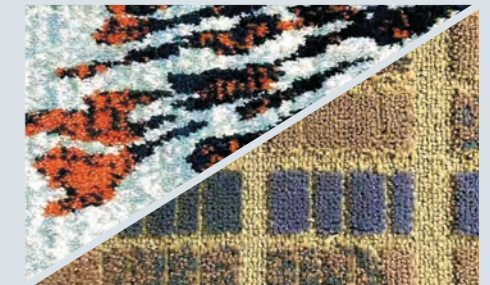
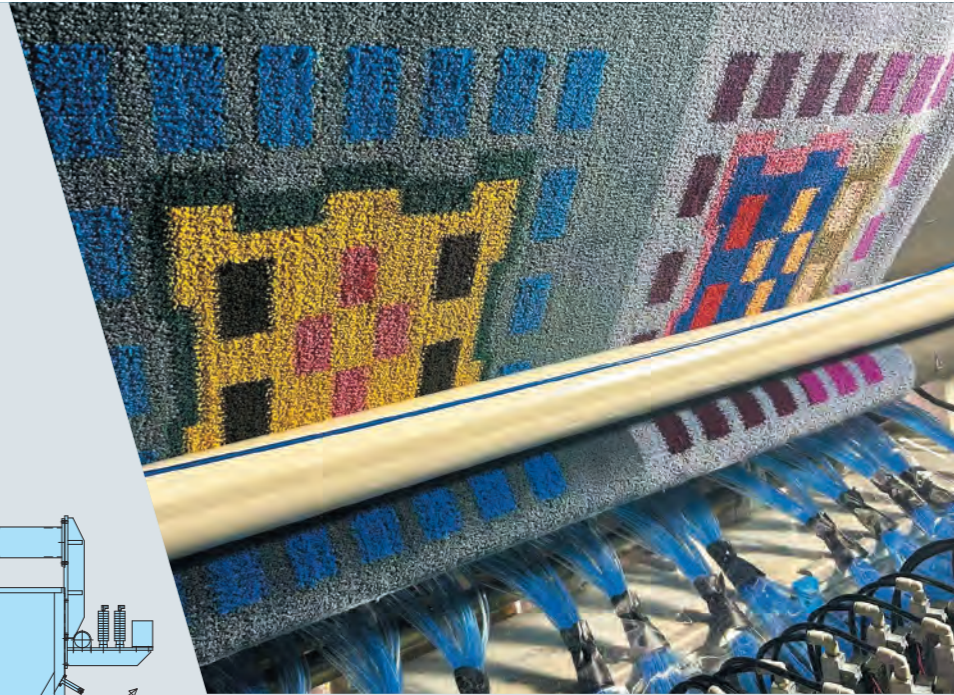
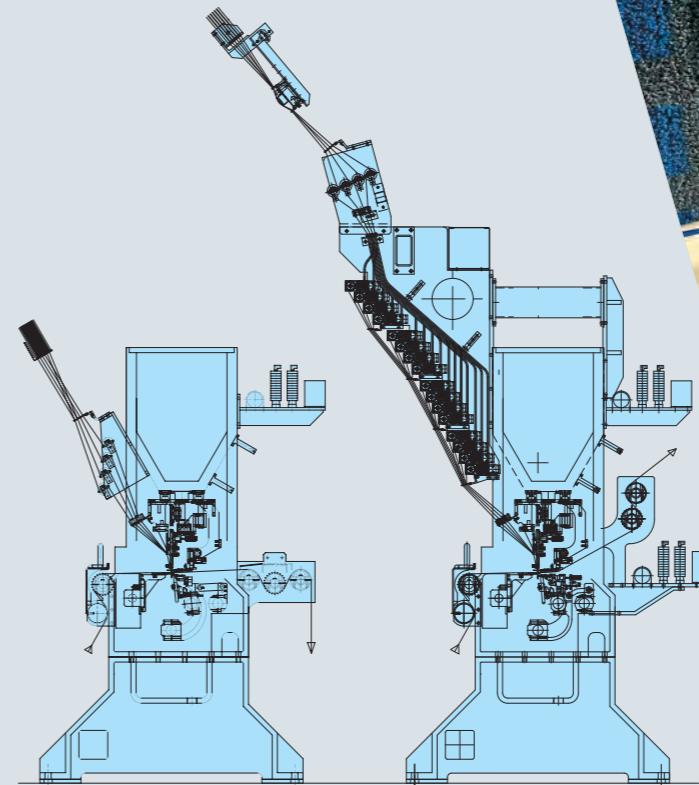
Velva



Android Cut & Loop

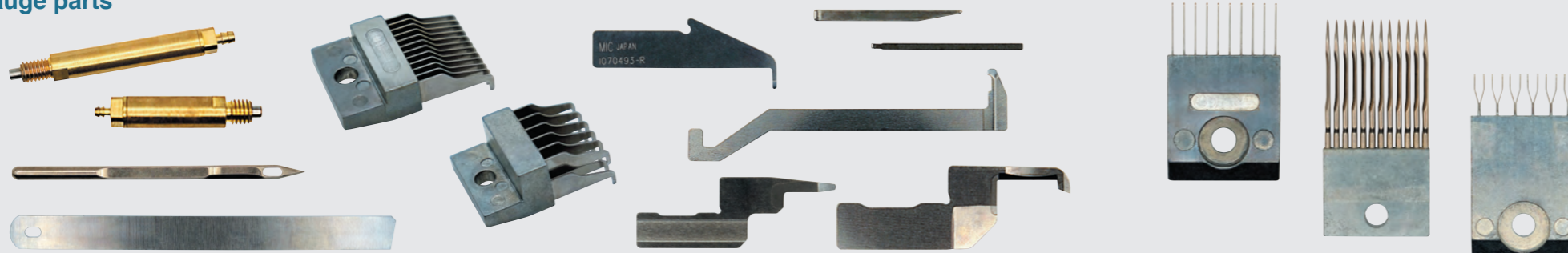


M.C.T-Cut M.C.T-Cut & Loop



Machine Type	Gauge	Working width	Yarn Feed	Looper mechanism	Needle	Remarks & Options
Level Loop	1/2G, 3/8G, 5/16G, 1/4G, 1/5G 3/16G, 5/32G, 1/8G, 1/10G, 1/12G, 5/64G	0.5m ~ 5m	Yarn feed roll. 5"roll or 6"roll Front side / Both side	Inline / Staggered Loop Looper	Inline / Staggered	Single Sliding Needle Bar - Mechanical cam Single Sliding Needle Bar - Linear motor Double Sliding Needle Bar - Mechanical camX2 Double Sliding Needle Bar - Linear motorX2 Jute mover
Q.T.S + Loop	1/2G, 3/8G, 5/16G, 1/4G, 1/5G 3/16G, 5/32G, 1/8G, 1/10G, 1/12G, 5/64G	0.5m ~ 5m	Quick Thread System Maximum 6-layer roll Front side / Both side	Inline / Staggered Loop Looper	Inline / Staggered	Single Sliding Needle Bar - Mechanical cam Single Sliding Needle Bar - Linear motor Double Sliding Needle Bar - Mechanical camX2 Double Sliding Needle Bar - Linear motorX2 Jute mover
2PH F.R.S + Loop	1/4G, 1/5G, 3/16G, 5/32G, 1/8G, 1/10G, 1/12G, 5/64G F5/32G+R5/32G, F1/6G+R1/6G, F1/5G+R1/5G	0.5m ~ 5m	2PH F.R.S Front side / Both side	Inline / Staggered Loop Looper	Inline / Staggered	Single Sliding Needle Bar - Mechanical cam Single Sliding Needle Bar - Linear motor Double Sliding Needle Bar - Mechanical camX2 Double Sliding Needle Bar - Linear motorX2 Jute mover
I.C.Y +Loop	1/4G, 1/5G, 3/16G, 5/32G, 1/8G, 1/10G, 1/12G, 5/64G F5/32G+R5/32G, F1/6G+R1/6G, F1/5G+R1/5G, F1/8G+R1/4G	0.5m ~ 5m	Stepping motor I.C.Y Front side / Both side	Inline / Staggered Loop Looper	Inline / Staggered	Single Sliding Needle Bar - Mechanical cam Single Sliding Needle Bar - Linear motor Double Sliding Needle Bar - Mechanical camX2 Double Sliding Needle Bar - Linear motorX2 Jute mover
Android Loop	5/32G, 1/8G, 1/10G, 1/12G	0.5m ~ 5m	Stepping motor I.C.Y Front side / Both side	Inline Loop Looper	Inline	Single Sliding Needle Bar - Linear motor
Chain Stitch Loop	3/8G, 5/16G, 1/4G, 1/5G, 3/16G, 5/32G	0.5m ~ 4.2m	Yarn feed roll. 5"roll or 6"roll. Front side	Inline Chain Stitch Looper	Inline	Single Sliding Needle Bar - Linear motor Jute mover
Chenille Loop	3/8G, 5/16G, 1/4G, 1/5G, 3/16G, 5/32G	0.5m ~ 4.2m	Yarn feed roll. 5"roll or 6"roll. Front side 2PH F.R.S (3/16G, 5/32G,)	Double Looper(3/8G, 5/16G, 1/4G) Single Looper (3/16G, 5/32G,)	Inline	Single Sliding Needle Bar - Linear motor Jute mover
Level Cut	3/4G, 5/8G, 3/8G, 5/16G, 1/4G, 1/5G, 3/16G, 5/32G, 1/8G, 1/10G, 1/12G, 5/64G	0.5m ~ 5m	Yarn feed roll. 5"roll or 6"roll Front side / Both side	Inline /Staggered Level Cut Looper	Inline / Staggered	Single Sliding Needle Bar - Mechanical cam Single Sliding Needle Bar - Linear motor Double Sliding Needle Bar - Mechanical camX2 Double Sliding Needle Bar - Linear motorX2
2PH F.R.S + Cut&Loop	1/4G, 1/5G, 3/16G, 5/32G, 1/8G, 1/10G	0.5m ~ 5m	2PH F.R.S Front side	Inline LCL Looper / N-LCL Looper	Inline	Single Sliding Needle Bar - Mechanical cam Single Sliding Needle Bar - Linear motor
2PH F.R.S + High Cut / Low Cut	1/4G, 1/5G, 3/16G, 5/32G	0.5m ~ 3.2m	2PH F.R.S Front side	Inline LCL Looper & Low Cut Looper	Inline	
I.C.Y + Cut&Loop	1/4G, 1/5G, 3/16G, 5/32G, 1/8G, 1/10G	0.5m ~ 5m	Stepping motor I.C.Y Front side	Inline LCL Looper / N-LCL Looper	Inline	Single Sliding Needle Bar - Mechanical cam Single Sliding Needle Bar - Linear motor
Android Cut&Loop	5/32G, 1/8G, 1/10G,	0.5m ~ 5m	Stepping motor I.C.Y Front side	Inline N-LCL Looper	Inline	Single Sliding Needle Bar - Linear motor
Velva	F5/32G+R5/32G, F1/6G+R1/6G, F1/5G+R1/5G, F1/4G+R1/4G, F5/16G+R5/16G	0.5m ~ 4.2m	Front-Yarn feed roll. 5"roll Rear- 2PH FRS or Stepping motor I.C.Y Both side Stepping motor I.C.Y	Staggered F- Loop Looper R- Level Cut Looper/N-LCL Looper	Staggered	Single Sliding Needle Bar - Mechanical cam Single Sliding Needle Bar - Linear motor Double Sliding Needle Bar - Mechanical camX2 Double Sliding Needle Bar - Linear motorX2
M.C.T-Cut	3/16G, 5/32G, 1/7G	0.5m ~ 5m	none	Inline Level Cut Looper	Inline I.C.N.	Sliding Needle Unit - Linear motor
M.C.T-Cut&Loop	3/16G, 5/32G, 1/7G	0.5m ~ 5m	Stepping motor I.C.Y Front side	Inline N-LCL Looper	Inline I.C.N.	Sliding Needle Unit - Linear motor

Gauge parts



Linear needle sliding device



Patent granted
US 11,585,028
EP 3723251
CN 111092534 B